

- Youth Groups
- Youth Charities
- Primary Schools
- Secondary Schools
- Universities / Colleges

Secondary Schools 
at The Chellington Centre

Expand Horizons

‘A **unique** and **memorable**
residential experience’

 **the Chellington**
Centre

A LITTLE BIT ABOUT US

The Chellington Centre is an award winning, eco-friendly, residential youth centre offering exclusive-use accommodation and facilities for both overnight and day trips, taking pupils beyond their normal environment with a lasting effect on personal and social development.

Set in a spectacular location, with stunning views across the Great Ouse valley, Chellington is only 30 minutes from the M1 and A1 motorways, but a world apart.

The Centre is well located for both biology and geography fieldwork activities and can support a wide range of cross-curricular themes. A popular choice for schools looking for a unique and memorable residential experience, with many returning year after year.



Chellington is uniquely able to create a magical reality, a space unto itself, the world as it should be.

Having experienced it, when they return home, the young people remember what they built for themselves at Chellington and what can be built in their own community too.”

Advocacy Academy

FLEXIBLE, ACCESSIBLE, AFFORDABLE!

Exclusive use
of the entire site

Planning support from
our on-site team

66

Flexible
accommodation
for up to 66

Fully equipped
kitchen

Barbeque, campfire
& gardens

36

Modern eco-friendly
bunkrooms for 36

Communal rooms
including a large hall
& two multi-use rooms

Comprehensive risk
assessments

30

On-site camping for 30

Multi-purpose
rounders/games field

Check our live diary for availability at www.chellington.org/booking

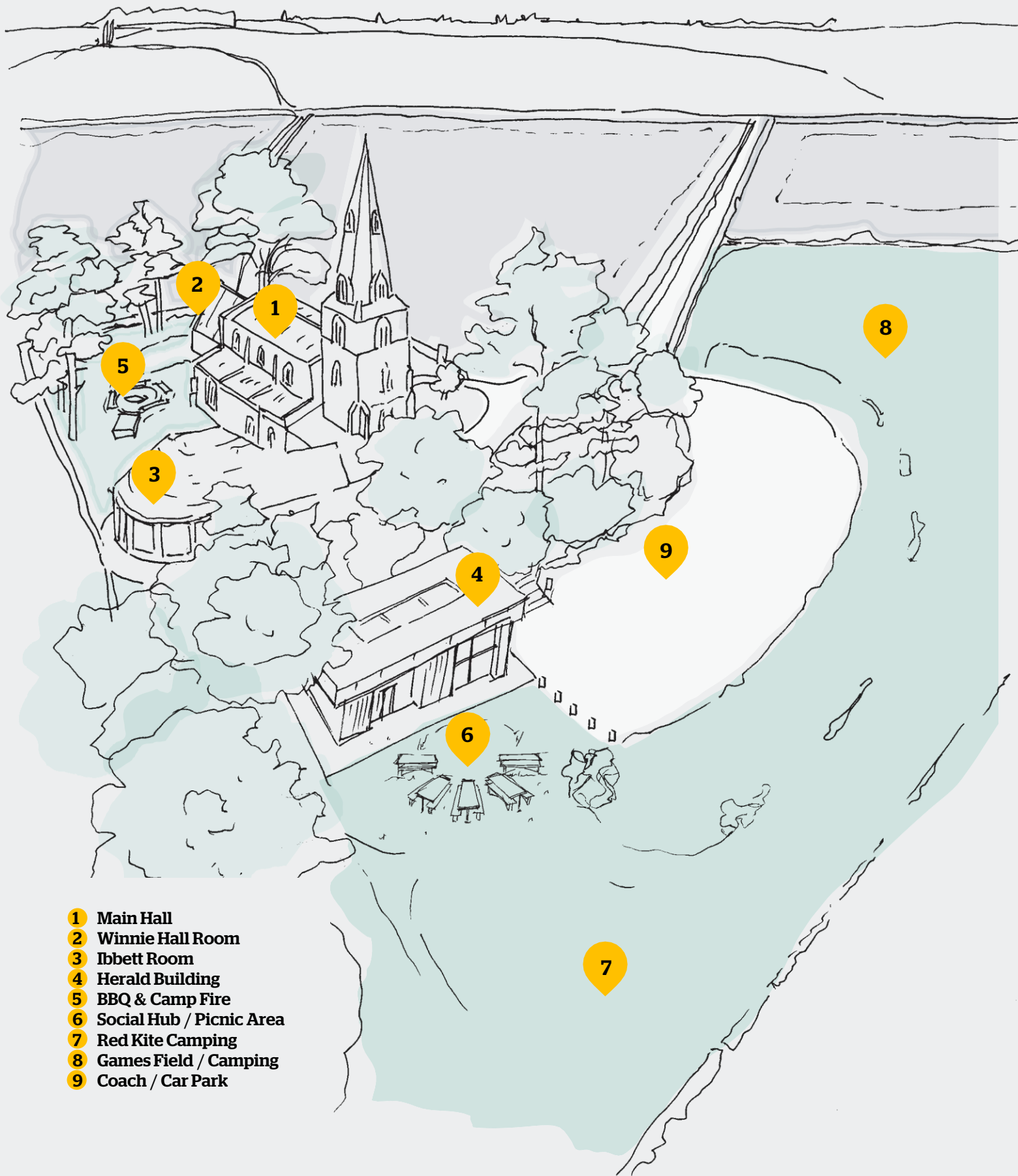
CC Bursary Fund

We believe that every young person should have the opportunity to take part in a residential experience. Our Bursary Fund exists to support this belief, offering financial support to school groups who find funding for a residential hard to access.”

Trustees of The Chellington Centre Charity

YOUR PROGRAMME

Enjoy the freedom to design and deliver your own programme of activities with sole-use of the entire site. Choose from a wide range of on-site activities to connect with nature, learn something new or simply have fun together!



- 1 Main Hall
- 2 Winnie Hall Room
- 3 Ibbett Room
- 4 Herald Building
- 5 BBQ & Camp Fire
- 6 Social Hub / Picnic Area
- 7 Red Kite Camping
- 8 Games Field / Camping
- 9 Coach / Car Park

No Cost / Low-Cost Activities



Games Pack

A whole cupboard of fun: rounders, tag rugby, footballs, badminton, tug of war, team parachutes, giant Jenga, chess, board games etc



Soft Archery

Introduce your group to archery in a fun and safe way – 6 sets available to book for self-delivery.



Media Pack

Everything you need to play movies, show a presentation, have a karaoke night and enjoy some music.



Tai Chi

Start or end the day with Tai Chi led by a qualified instructor.



Orienteering

A complete introductory orienteering activity package.



Chellington Quiz

Free educational resource for exploring the site inside and out.



Harrold-Odell Country Park

With spectacular views from the Centre, enjoy the walk to this Green Flag water park with 144 acres of beauty and tranquility.

Partnered Activities



Forest School

Choose from a variety of forest skills, shelter building, fire lighting, wood craft, learning about local trees and wildlife surrounding the Centre.



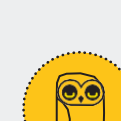
Archery

A fun and educational activity led by a qualified coach – a great way to exercise, focus and build confidence.



Boot Camp

Instructor led outdoor team activities including boxing, tug-of-war and more.



Animal Encounters

Enjoy a fantastic collection of friendly, exotic and companion animals guided by experienced animal handlers.



Mini Map Makers

Learn all about maps with these inspiring workshops run by a professional cartographer.



Art Workshops

Options include printing, sculpture, painting, mask making, collage, clay modelling, sgraffito, wax/ink and more.



See our website for full list of activities available at the Centre and further afield. Book on-site activities online or call us on **01234720726** to discuss.

ENJOY TIME IN & OUTDOORS

All our amazing spaces, both inside the main building and in the surrounding area, have been designed with maximum flexibility in mind for games, team activities or for young people to simply enjoy their freedom.

The main hall provides a wonderful focal point for your group. The dramatic, high timbered ceiling creates great acoustics for musical events and the steps to the chancel form a natural stage.

For many young people, time around the campfire and BBQ can be the highlight of their trip. It's time to talk, share life experiences and enjoy the moment together. The adjacent games field with no public access is a stunning setting to enjoy a multitude of activities as well as overflow camping for larger school groups.



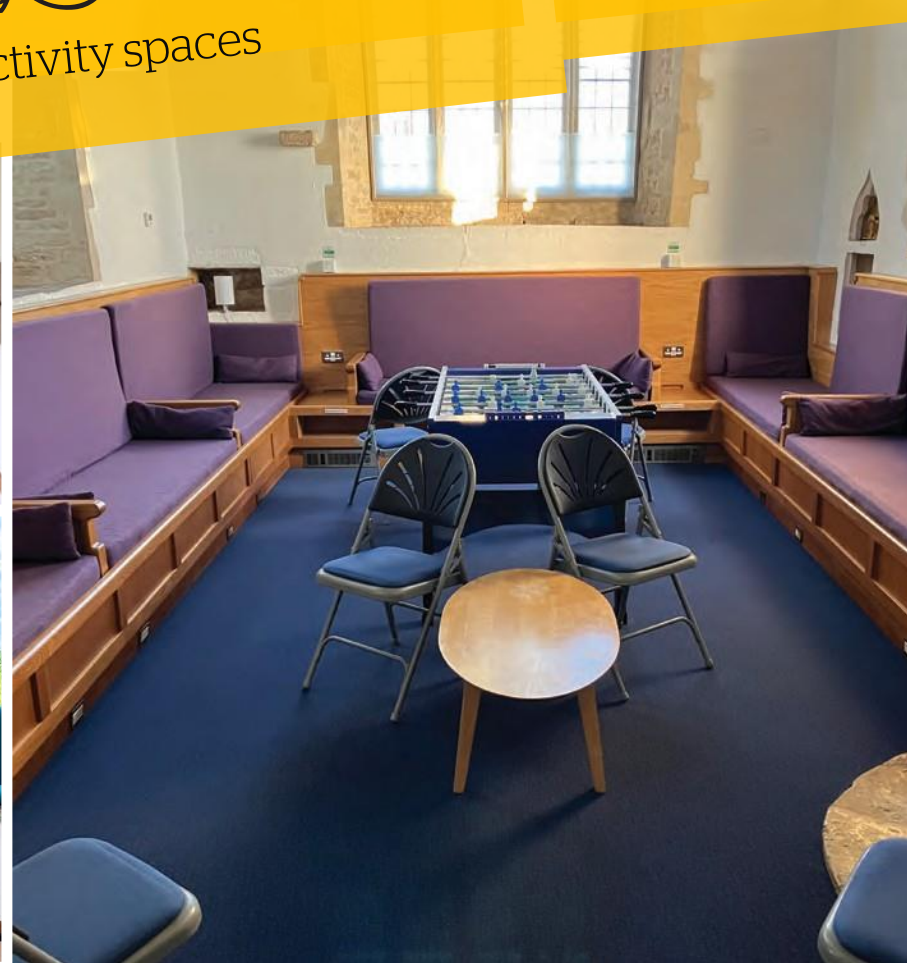


With its spectacular semi-circular wall of windows, the inspiring Ibbett Room brings 180° of sky and countryside into the Centre, offering stunning views over the Ouse Valley and lakes in the country park below.

BREAKOUT

Two more great activity spaces

Everyone loves spending time in the Winnie Hall Room – a great space for study, drama, music, teaching, presentations, buffet set up at meal times, playing board games or just chatting and chilling. This room can also be used as a bedroom for 6 people.





EATING

Our fully equipped modern kitchen has everything you need for self-catering for up to 66. The hatch to the main hall makes it easy for young people to help.

- Fully equipped kitchen
- Barbeque
- Campfire



SLEEPING

We welcome groups of all sizes. Big or small, each group enjoys sole use of the entire site. Up to 36 can sleep in our bunkrooms with the option to add a further 30 camping.

66
Flexible accommodation for up to 66

There are 5 separate shower cubicles and 7 toilets in the main building plus the option to use a further 4 shower cubicles and toilets in wash-rooms in our new Herald Building (includes an accessible shower/toilet in both buildings).



OUR COMMITMENT TO THE ENVIRONMENT

This is an ancient site. Communities have existed in harmony here since the bronze age with local sheep farming, leatherwork, lacework and reed-weaving - all important medieval industries. As custodians, we have a duty to share knowledge, engage and lead in caring for our environment. This is particularly important to us as we work with young people whose future will be impacted by how we operate.

We are proud to have achieved Silver Award certification from Green Tourism in recognition of our extensive work in developing a

sustainable, biodiverse Centre in direct response to our commitment to young people, our community and the planet.



Green Education

Our ongoing initiatives include: nature walks, nature identification boards, re-wilding activity (tree & hedgerow planting, wildflower bridging), socio-historical quizzes, binocular bird-spotting, star-gazing, eco-signage tips & on-site forest school activities.



Energy Use

Our electricity source is 100% renewable energy (hydro and wind). We have an efficient eco-air-source system for all our (underfloor) heating and hot water needs. Double glazed windows and insulation minimise heat loss, making it comfortable and sustainable for year-round accommodation.



Lighting

80% of our lighting is now flexibly controlled, low consumption LED.



Local Food Sourcing

We encourage you to support our village shop and local farms if you can. They will deliver boxes of fresh groceries with only a few days' notice.



Drinking Water

Our Bedfordshire water is lovely from the tap.



Recycling & Waste

We have ongoing initiatives to source ecological and recycled products. We have drastically reduced the amount of land-fill waste and recycling we produce and are committed to working with you and our local partners to do more.



Single-Use

We strongly discourage the use of single-use cutlery, plates, bowls, cups or plastic water bottles.





To make a booking, go to the live diary on our website at:

www.chellington.org/booking

If you would like to find out more about residential or day trip experiences at Chellington, please call or email us. We would love to hear from you.

 **01234 720726**

 **admin@chellington.org**

The Chellington Centre is run by a small independent charity with a mission to provide an inspirational and rural setting for young people to develop their personal potential.

We would like to sincerely thank all our friends, visitors, neighbours, volunteers (young & old), trustees, staff, donors and patrons. Thanks to you all, the Chellington Centre can continue to thrive, supporting young people and their communities.

**The Chellington Centre. St Nicholas Church, Felmersham Road,
Carlton, Bedford MK43 7NA**

Company registration number (England and Wales): 08794342

Charity registration number (England and Wales): 1156511

**Printed using vegetable-based inks on environmentally
certified, recycled paper**